

# Intelligent DC UPS Module



## 12V/9~36V DC Input, 12V DC Output Uninterruptible Power Supply Module with Diagnostics

- VESA 75 or VESA 100 mounting
- 9-36V input through terminal or power jack, or 12V through power jack only
- Battery status and charge monitoring utility. Remote network management capabilities

### Features

- 60W (5A @ 12V) or 100W (8.3A @ 12V) output
- 28Wh or 56Wh, for more than 140 minutes operation time (dependent on panel PC power requirements)
- Rugged metal enclosure for standard VESA 75/100 mounting
- Web-based, remote network management, no software installation required
- Local PC-based monitoring software for input detection and battery status monitoring
- Auto shut down when battery low
- Remote DC output ON/OFF switch for external switch installation
- Provides stable power to the PC during line sags and spikes and absorbs power surges and transients, protecting expensive equipment

Model Name	AUPS-A10 AUPS-A20	AUPS-B10 AUPS-B20
Input Power	AUPS-A10 12V AUPS-A20 9~36V	AUPS-B10 12V AUPS-B20 9~36V
Dimensions	150 x 95 x 34 mm	170 x 150 x 34 mm
Battery Capacity	28 Wh (Watt/H our)	56 Wh (Watt/Hour)
Output Power	60W (5A@12V)	100W (8.3A@12V)
VESA Support	75x75 mm	75 x 75 mm 100 x 100 mm



**AUPS-A10**  
VESA 75, 12V DC Input 12V DC, 5A, 60W Output



**AUPS-A20**  
VESA 75, 9V~36V DC Input 12V DC, 5A, 60W Output



**AUPS-B10**  
VESA 75/100, 12V DC Input 12V DC, 8.3A, 100W Output



**AUPS-B20**  
VESA 75/100, 9V~36V DC Input 12V DC, 8.3A, 100W Output

1  
IEI Mobile Solutions

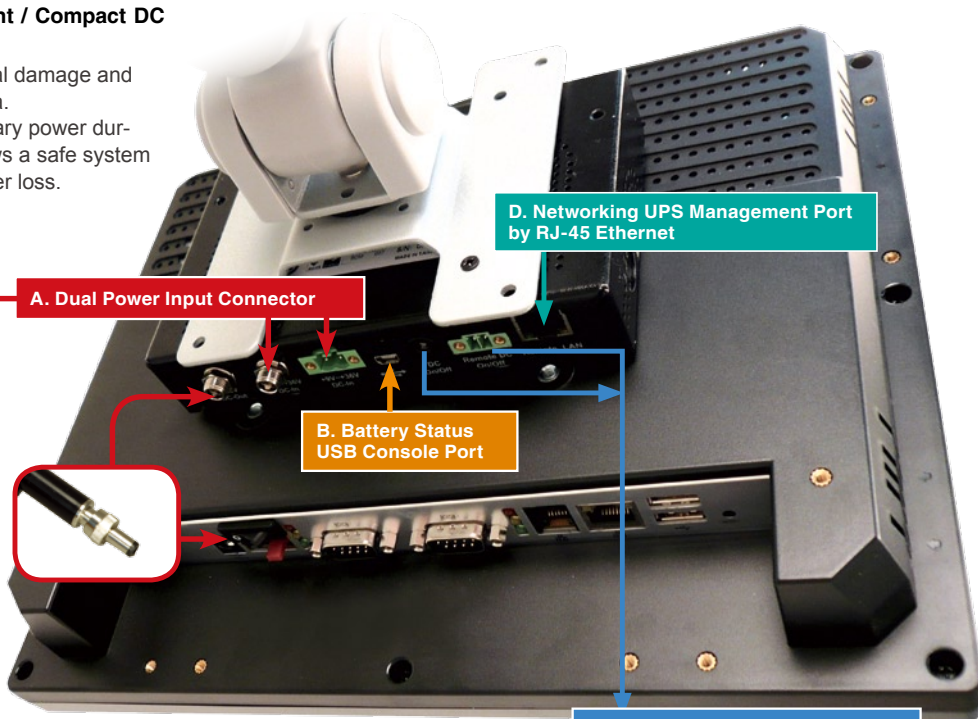
## Intelligent UPS Module

### High Energy Density / Lightweight / Compact DC to DC UPS & Power Module

Protect your panel PC from electrical damage and greatly reduce the risk of losing data. The UPS module serves as temporary power during a short break in power and allows a safe system shutdown for longer periods of power loss.

**1. DC 9V~36V input by terminal block (Only AUPS-A20 / AUPS-B20)**

**2. (1) Only 12V input by DC jack (AUPS-A10 / AUPS-B10)  
(2) Wide 9V~36V input by DC jack (AUPS-A20 / AUPS-B20)**



2  
Automation Panel Solutions

3  
Video Wall Controller/ Splitter

4  
RISC-based Solutions

5  
PACSmate Medical Solutions

6  
Optional Peripherals

LED Signal Table			
	LED 1	LED 2	LED 3
Color	Green	Yellow	Orange
Function	Power Input	Charger Status	Battery Status
Dark	DC Power Out	Discharging	Battery Full
Light	DC Power In	Charging	Battery Low
Blinking			



## AUPS Network Administration Tool

• Network Remote Management Anywhere



• Network Remote Management Software



**Battery Capacity Status**

STATUS: IEIUPS!  
Build Date: Sep 30 2009 11:20:54

• STATUS - display UPS status and change UPS ON/OFF  
• Send E-mail - send UPS status with email  
• Configuration - setup IP Address and enable DHCP

UPs Status Monitoring

**Email Status Report**

Send E-Mail

SMTP Server: [input]  
User Name: [input]  
Password: [input]  
To: [input]  
Message: [input]

Send

• Intelligent Software Utility

The remote management software utility and application program allows users to easily get the status of the AUPS and to control the AUPS power functions from anywhere with Internet connection.



Remote control DC output ON/OFF via web interface.

Click ALARM to get each AUPS status via internet

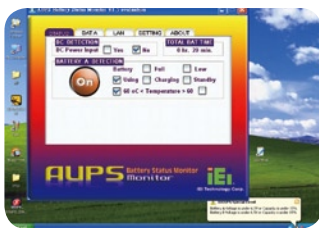
- STATUS
- Send E-mail
- Board configuration

Network Remote Management Software

## AUPS Local USB Utility Tool

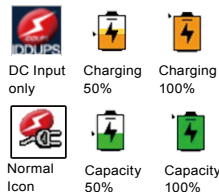
Monitor the Most Critical Battery Functions on the Local Machine

The battery monitoring utility allows AUPS status monitoring and configuration ability. Uninterruptible Power Systems is a significant product that serves as emergency power when you suffer from electric event



### Battery Monitoring Utility Networking Remote Management

- Battery detection
- Battery capacity status
- Battery charge
- DC Input Indicator
- Battery Indicator
- Temperature warning
- Low battery alarm
- Connection port status



## Battery Monitoring Utility

### BATTERY STATUS

• BAT.A shows Battery status real time monitoring

- Battery Type
- Battery usage remaining time
- Battery capacity bar
- Real time information updating

### AUPS STATUS

• STATUS shows DC / Battery power input

- DC Input Detection
- Battery Status Detection

### LAN CONFIGURATION

• LAN shows system IP Address information

### ABOUT

• shows AUPS Utility information

### SETTING

• SETTING shows Connection Detection port

**Auto Shutdown**

- Auto-Scan Connection port
- System shuts down condition by battery capacity setting

Meanwhile, IEI also provides AUPS API SDK and command list for customer programming under DOS or Linux system

### AUPS API Content

- Inti()
- AUPS Close()
- WriteCommand()
- ReadCommand()
- Error Code Definition()

### AUPS API SDK

- AUPS API.pdf
- AUPSAPI.dll
- AUPSAPI.h
- AUPSAPI.lib



AUPS API SDK/Content

## AUPS Module Specifications

Model Name		AUPS-A10	AUPS-A20	AUPS-B10	AUPS-B20
VESA Type		VESA 75	VESA 75	VESA 75 and 100	VESA 75 and 100
Input Data	Input voltage Unated/range	DC +12V	DC +9V~+36V	DC +12V	DC +9V~+36V
	Input current rated	1. Adapter is 12V~6A (Load is 60W) 2. Battery is 6V~12A (Load is 60W)		1. Adapter is 12V~9A (Load is 100W) 2. Battery is 12V~9A (Load is 100W)	
	Standby power consumption	0.3A (0.2A if Network Management disabled)			
	Operation with charging current	500mA			
	Operation with charging power consumption	6W		10W	
Output Data	Charging time with system ON/OFF	8hrs / 2hrs (Battery empty)			
	Output voltage for normal operation	DC +12V +/-5%			
	Output voltage for battery operation, approx.	6~8.4V DC6 V (exhaustive discharge protection)		12~16.8V DC12 V (exhaustive discharge protection)	
	output current	0A~5A		0A~8.3A	
Protection	Efficiency(nominal operation)/power lossat Vin=12V, Iout=80% of full loading	89%	93%	95%	94%
	short-circuit protection	Yes			
	Exhaustive discharge protection	1.Battery low is 10% of Battery capacity 2.Shutdown 5% of Battery capacity (Default) 3.The end of Battery discharge voltage is 6V			
EMC / Safety certification		CE, FCC			
Monitoring	Ethernet interface	Web-based, specification 10/100Mbps with RJ-45 connection, Cat. 5 cable			
	USB interface	PC-capable, specification 2.0 with full speed, i.e. 2 Mbit/s. Standard 4-core shielded cable, USB Series "mini B" connector to DC-UPS			
Physical	Dimensions	152mm(L) * 96mm(W)*28mm(H)		174mm(L) * 147mm(W)*35mm(H)	
	Weight	1.2 kg		1.8 kg	
LED Indicator	Green	DC power input			
	Yellow	Battery charging			
	Orange	Bettery discharging			
Environment	Operating Tem.	0°C~40°C			
	Storage Tem.	-20°C~50°C			

Note1: Suggest to connect DC input constantly. Battery will be drained after 14 hours.

Note2: System power consumption + AUPS charging power consumption = Total watts of power source

## Battery Module Specifications

Model Name		AUPS-A10	AUPS-A20	AUPS-B10	AUPS-B20
Battery Model Name		BAT-LI-2S2P3800			BAT-LI-4S2P3800
Battery	Battery type	Li-Ion 2S2P 7.4V			Li-Ion 4S2P 14.8V
	Battery capacity	7.4V 3800 mA AH			14.8V, 3800 mA AH
	Maximum charge voltage	8.4V			16.8V
	The end of discharging voltage	5.6V			11.2V
	Suggestive charging current (Max.)	2A			2A
	System continuous discharging current(Max)	7.6A			7.6A
	The end of charge condition	250mA / 1Min			200mA / 1Min
	Discharge protection	Under voltage protection / Over current protection			
	Charge protection	Over voltage protection / Over current protection			
	Ambient tmeperature	0°C~40°C			0°C~40°C
	Storage temperature	-20°C~60°C			-20°C~60°C
	Self-discharge rate	340uA~440uA			
	Dimensions	139mm(L) * 47mm(W)*26mm(H)		165mm(L) * 76mm(W)*26mm(H)	
	Weight	236g		450g	
	Cycle life	300 charge / discharge cycles			
Backup	60W / 10Min		100W / 10Min		
Safety class		CE, FCC			

Note: Suggest to replace Battery Module every 2 years.

### Selection Table for UPS Modules and Main Buffering Time

AFOLUX PPC	AUPS-A10	AUPS-A20	AUPS-B10	AUPS-B20
<b>Under 50W solution</b>				
AFL-057-LX (15W~20W)	145min	145min	290min	290min
AFL-07A-N270 (20W~25W)	100min	100min	200min	200min
AFL-08AH-N270 (25W~30W)	70min	70min	140min	140min
AFL-10A-N270 (25~30W)	70min	70min	140min	140min
AFL-10A-9103 (40W~45W)	50min	50min	100min	100min
AFL-10A-LX (25W~30W)	70min	70min	140min	140min
AFL-12A-LX (25W~30W)	70min	70min	140min	140min
AFL-12B-CX2 (38W~42W)	50min	50min	100min	100min
AFL-12A-N270 (25W~30W)	70min	70min	140min	140min
AFL-12B-9103 (45W~48W)	45min	45min	90min	90min
<b>50W ~ 100W solution</b>				
AFL-15B-915-CM370 (58W~63W)	-	-	35min	35min
AFL-15C-9652-T7500 (65W~70W)	-	-	30min	30min
AFL-17B-915-CM370 (75W~80W)	-	-	25min	25min
AFL-17C-9652-T7500 (85W~90W)	-	-	20min	20min
AFL-19B-915-CM370 (75W~80W)	-	-	25min	25min
AFL-19C-9652-T7500 (85W~90W)	-	-	20min	20min



BAT-LI-2S2P3800

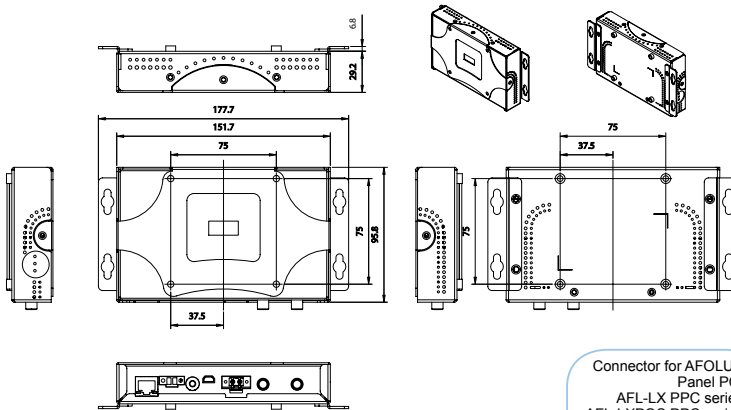


BAT-LI-4S2P3800

Note: The backup time could be varied on different models or operating temperature.

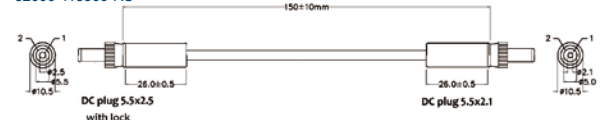
# AUPS Mechanical Drawing (Unit: mm)

## AUPS-A10/20

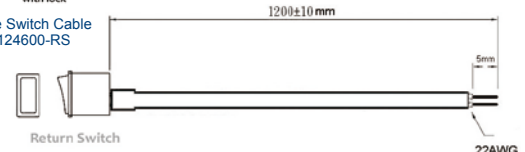


Connector for AFOLUX Panel PC:  
 AFL-LX PPC series  
 AFL-LXPOS PPC series  
 AFL-CX2 PPC series  
 AFL-9103 PPC series  
 AFL-N270 PPC series

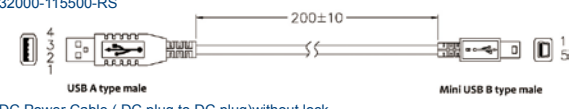
DC Power Cable ( DC plug to DC plug) with lock  
 32000-115300-RS



Remote Switch Cable  
 32000-124600-RS



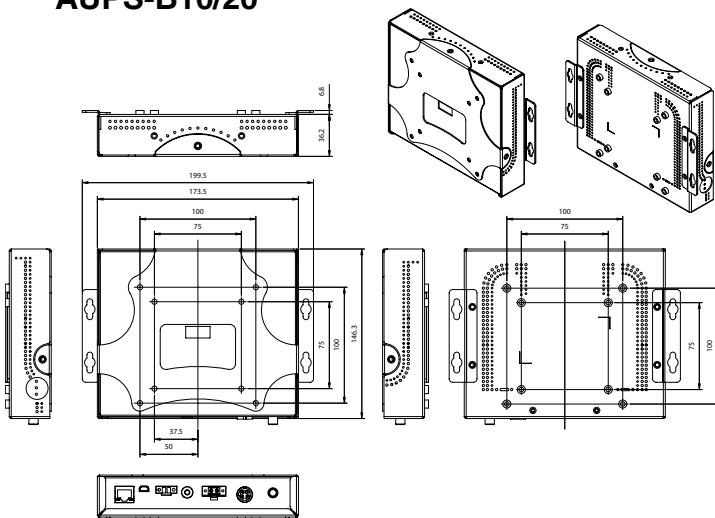
USB Connection Cable  
 32000-115500-RS



DC Power Cable ( DC plug to DC plug)without lock  
 32000-120400-RS

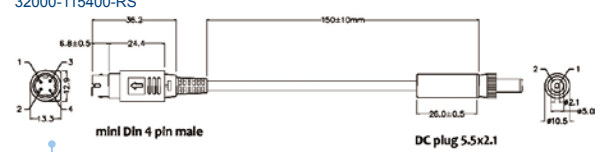


## AUPS-B10/20



Connector for AFOLUX Panel PC:  
 AFL-915 PPC series  
 AFL-965 PPC series

DC Power Cable ( DC plug to mini DIN)  
 32000-115400-RS



## Ordering Information

Part No.	Description
AUPS-A10-R11	VESA 75, DC 12V input, 12V output 60W UPS module with 3800mAh, 2S2P Li-Ion battery
AUPS-A20-R11	VESA 75, DC 9~36V input, 12V output 60W UPS module with 3800mAh, 2S2P Li-Ion battery
AUPS-B10-R11	VESA 100, DC 12V input, 12V output 100W UPS module with 3800mAh, 2S4P Li-Ion battery
AUPS-B20-R11	VESA 100, DC 9~36V input, 12V output 100W UPS module with 3800mAh, 2S4P Li-Ion battery
BAT-LI-2S2P3800 (AUPS-A10/20)	Smart battery ;TE9IC032K1002 ;Lithium ion battery (2S2P); 7.4V;3800mAh;RoHS
BAT-LI-4S2P3800 (AUPS-B10/20)	Smart battery ;TE9IC042K1002 ;Lithium ion battery (4S2P); 14.8V;3800mAh;RoHS

## Packing List

Item	DC power cable, 150mm. Male 4-pin mini-DIN to DC plug 5.0x2.1 (AUPS-B10/B20 only)	DC power cable, 150mm, DC plug 5.5x2.1 to DC plug 5.0x2.5 without lock	DC power cable, 150mm, DC plug 5.5x2.1 to DC plug 5.0x2.5 with lock	USB cable, 200mm, USB type A male to mini USB	Remote switch cable, 1200mm	Screws kit	Utility CD (including utility software and user's guide)
Part Number	32000-115400-RS	32000-120400-RS	32000-115300-RS	32000-115500-RS	32000-124600-RS	44013-030041-RS	7B000-000087-RS
Q'ty	1	1	1	1	1	1	1

1  
IEI Mobile Solutions

2  
Automation Panel Solutions

3  
Video Wall Controller/ Splitter

4  
RISC-based Solutions

5  
PACsmate Medical Solutions

6  
Optional Peripherals