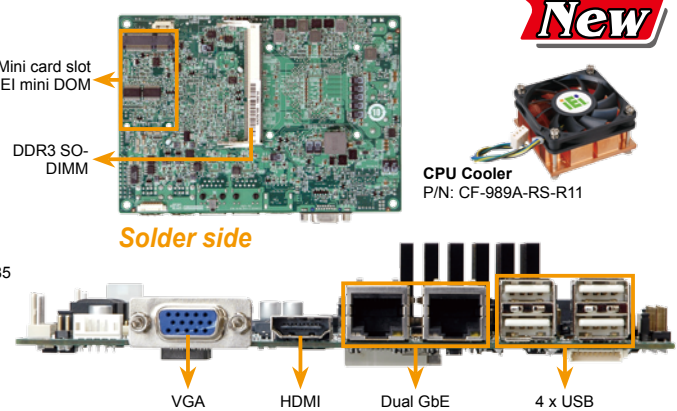
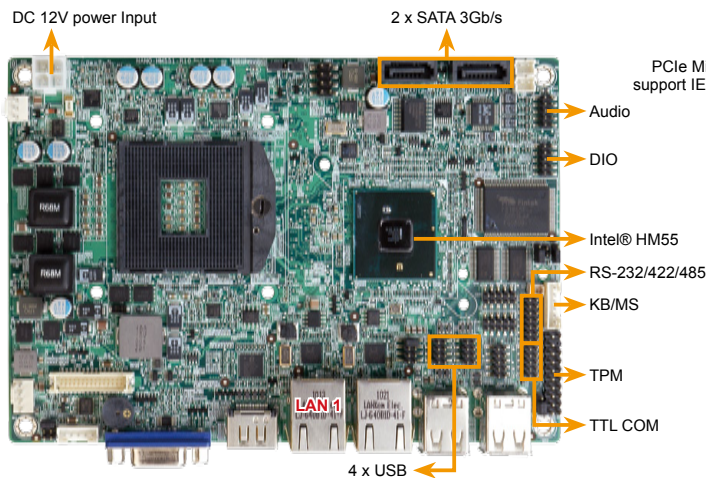


epic

## NANO-HM551

EPIC SBC supports Socket G1 for Intel® Core™ i7/ i5/ i3/ Celeron® CPU, VGA/HDMI, Dual PCIe GbE, USB 2.0, PCIe Mini, SATA 3Gb/s and Audio, RoHS



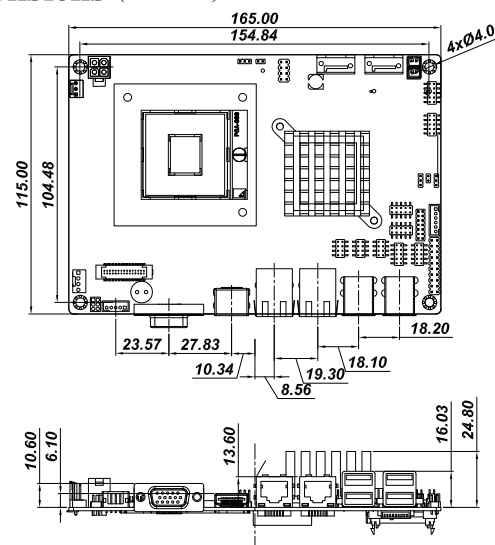
## Specifications

- ◆ CPU  
Socket G1 for Intel® mobile Core™ i7/ i5/ i3 and Celeron® processor (Socket 988)
- ◆ PCH  
Intel® HM55
- ◆ BIOS  
UEFI BIOS
- ◆ Memory  
One 204-pin 800/1066MHz DDR3 SDRAM SO-DIMM up to 4GB
- ◆ Graphic  
Gen 5.75 with 12 Execution Units DirectX\* 10, OpenGL\* 2.1
- ◆ Display Interface  
Analog CRT by VGA connector (2048x1536)  
18/24-bit dual-channel LVDS (1600x1200)  
HDMI supports up to 1080p resolution (1920x1080)
- ◆ LAN  
Dual PCIe LAN controller by Realtek RTL8111E, LAN1 with ASF 2.0 support
- ◆ Super I/O  
Fintek F81865
- ◆ I/O Interface  
8 x USB 2.0                      1 x 6-pin pin header for KB/MS  
3 x RS-232                        1 x RS-232/422/485 (COM3) with Auto Flow control  
1 x TTL COM (COM5)    2 x SATA 3Gb/s with SATA power connector
- ◆ Audio  
Realtek ALC888 HD codec
- ◆ Expansion  
1 x Mini PCIe card slot (PCIe + USB + SATA signal) support IEI mini DOM
- ◆ TPM
- ◆ Fan Connector  
2 x 10-pin header
- ◆ Watchdog Timer  
Software programmable support 1~255 sec. system reset
- ◆ Digital I/O  
8-bit digital I/O, 4-bit input / 4-bit output
- ◆ Fan Connector  
1 x 4-pin CPU fan connector  
1 x 3-pin system fan connector
- ◆ Power supply  
12V only, AT/ATX support
- ◆ Power Consumption  
12V@3.8A (Intel® Core™ i3 330M 2.13GHz CPU with DDR3 1066MHz 1GB)
- ◆ Temperature  
Operation: -10°C ~ 60°C
- ◆ Humidity  
Operation: 5% ~ 95%, non-condensing
- ◆ Dimensions  
115mm x 165mm
- ◆ Weight  
GW:850g / NW:350g

## Features

1. EPIC SBC with Socket G1 for Intel® Core™ i7/ i5/ i3 and Celeron® processor
2. VGA/24-bit dual channel LVDS/ HDMI for dual display support
3. DDR3 800/1066MHz SDRAM supported (system max. 4 GB)
4. Support five COM, eight USB 2.0, two SATA, audio
5. IEI One Key Recovery solution allows you to create rapid OS backup and recovery

## Dimensions (Unit: mm)



## Packing List

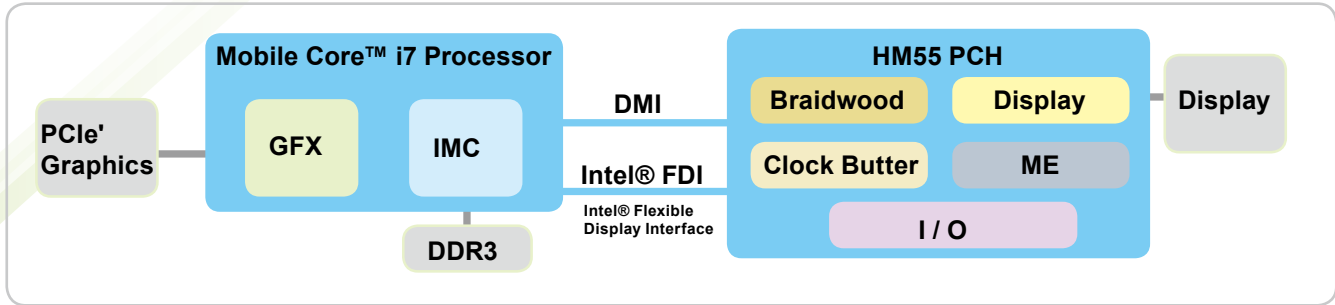
|  |                      |
|--|----------------------|
| 1 x NANO-HM551 single board computer                     |                      |
| 1 x Power cable (P/N: 32100-087100-RS)                   |                      |
| 2 x RS-232 cable (P/N: 32200-000049-RS)                  |                      |
| 1 x SATA with power cable kit (P/N: 32801-000201-100-RS) |                      |
| 1 x Audio cable (P/N: 32000-072100-RS)                   | 1 x Mini jumper pack |
| 1 x QIG  | 1 x Utility CD       |

## Ordering Information

| Part No.        | Description   |
|-----------------|---|
| NANO-HM551-R10  | EPIC SBC supports Socket G1 for Intel® Core™ i7 CPU, VGA/ HDMI, Dual PCIe GbE, USB 2.0, Mini PCIe, SATA 3Gb/s and Audio, RoHS |
| 32000-070301-RS | Dual port USB cable   |
| 32100-043403-RS | ATX power cable   |
| CF-989A-RS-R11  | CPU cooler for mobile socket-G (PGA988) up to 55W processor, Copper, 60x60x27.6mm, RoHS                                       |
| CF-989B-RS      | CPU cooler for mobile socket-G (PGA988) 50W processor, Aluminum, 60x60x27.6mm, RoHS   |
| 32000-023800-RS | KB/MS cable   |
| TPM-IN01-R11    | 20-Pin Infineon TPM module, software management tool, firmware V3.17  |

# Intel® HM55/QM57 Chipset

Best Graphic Performance Solution for Mobile Core™ i7/ i5/ i3/ Celeron® Platform

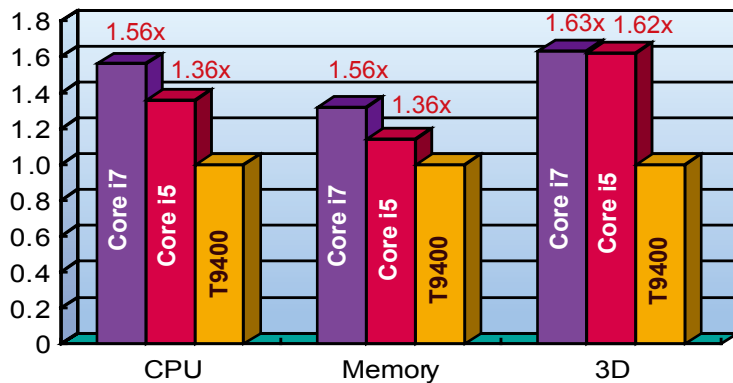


## Mobile Core™ i7 Embedded CPU List for QM57/ HM55

Yellow means long term support

| Package Type             | Brand Name                  | Code Name    | CPU No.        | Clock Speed | L2 Cache | TDP | iAMT6.0           | Integrated Graphic |
|--------------------------|-----------------------------|--------------|----------------|-------------|----------|-----|-------------------|--------------------|
| Socket G1<br>988-pin PGA | Core™ i7<br>Extreme Edition | Arrandale    | i7-940XM       | 2.13G       | 8M       | 55W |                   |                    |
|                          |                             |              | i7-920XM       | 2.0G        | 8M       | 55W |                   |                    |
|                          | Core™ i7                    |              | i7-840QM       | 1.86G       | 8M       | 45W |                   |                    |
|                          |                             |              | i7-820QM       | 1.73G       | 8M       | 45W |                   |                    |
|                          |                             |              | i7-740QM       | 1.73G       | 6M       | 45W |                   |                    |
|                          |                             |              | i7-720QM       | 1.6G        | 6M       | 45W |                   |                    |
|                          |                             |              | <b>i7-620M</b> | 2.66G       | 4M       | 35W | V (For QM57 only) | V                  |
|                          | Core™ i5                    |              | <b>i5-520M</b> | 2.4G        | 3M       | 35W | V (For QM57 only) | V                  |
|                          |                             |              | i5-540M        | 2.53G       | 3M       | 35W |                   | V                  |
|                          |                             |              | i5-450M        | 2.4G        | 3M       | 35W |                   | V                  |
|                          |                             |              | i5-430M        | 2.26G       | 3M       | 35W |                   | V                  |
|                          | Core™ i3                    |              | i3-370M        | 2.4G        | 3M       | 35W |                   | V                  |
|                          |                             |              | i3-350M        | 2.26G       | 3M       | 35W |                   | V                  |
|                          |                             |              | i3-330M        | 2.13G       | 3M       | 35W |                   | V                  |
| Celeron®                 |                             | <b>P4500</b> | 1.86G          | 2M          | 35W      |     | V                 |                    |

## CPU Performance Comparison



Intel® Core™ i7 processor is 1.56 and 1.6 time faster on CPU and graphic performance compared with the T9400 CPU plus GM45 chipset.

Note: Intel® Core™ i7 Quad Core CPU does not support internal graphic, please use add-on graphic card for graphic support.

- i7-620M 2.66G
- i5-520M 2.4G
- T9400 2.53G

## Valued Mobile Core™ i7 Choice

Specification differences between QM57 and HM55

| Ibex Peak-M Feature                            | QM57                 | HM55     |
|--|----------------------|----------|
| PCI-Express                                    | 8 ports              | 6 ports  |
| SATA   | 6 ports              | 4 ports  |
| TDP  | 3.2~3.5W             | 3.2~3.5W |
| Intel Active Management Technology (Intel AMT) | 6.0 (integrated KVM) | No       |
| USB 2.0 Ports                                  | 14 ports             | 12 ports |

HM55 total solution coming soon!!

### KINO-HM551

Mini-ITX SBC, 12V, 6COM, HDMI/LVDS/VGA/DVI  
Dual GbE, PCIe x16, Dual PCIe Mini



### NOVA-HM551

5.25" SBC, 12V, 6COM, Dual HDMI/LVDS/VGA, Dual GbE, PCIe x16, PCI-104, Dual PCIe Mini



### NANO-HM551

EPCI SBC, 12V, 5COM, HDMI/LVDS/VGA  
Dual GbE



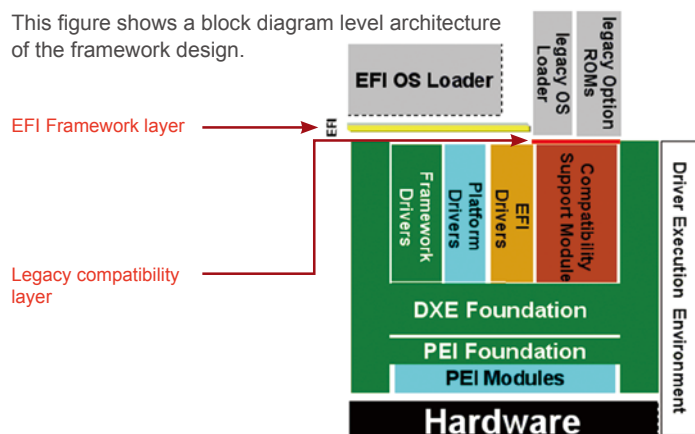
# UEFI Introduction



- **UEFI** (Unified Extensible Firmware Interface) BIOS is a next-generation BIOS firmware based on UEFI specifications and the Intel® Platform Innovation Framework for EFI.
- UEFI BIOS can be expanded by using a variety of drivers, development tools, support utilities and pre-boot application (PBA) solutions.

## UEFI Architecture

This figure shows a block diagram level architecture of the framework design.



### Legacy BIOS V.S. UEFI

|                     | Legacy BIOS  | UEFI  |
|---------------------|--|---|
| Language            | Assembly   | C (99%)   |
| Resource            | Interrupt<br>Hardcode Memory Access<br>Hardcode I/O Access | Driver \ Protocols  |
| Processor           | x86 16-bits  | CPU Protected Mode (Flat Mode)  |
| Target              | Binary Code  | Removable Binary Drivers  |
| Expand              | Hook Interrupt   | Load Driver   |
| OS Bridge           | ACPI<br>(SMI, INT Service)                                 | RunTime Driver Service<br>AED (ACPI EFI Protocol Driver)<br>(ACPI, SMI) |
| 3rd Party ISV & IHV | Not Fully Supported  | Easily Supports Multi Platforms   |

The architecture represents a structured implementation composed primarily of the following:

- Foundation code that binds the pieces together
- Modular elements of code that perform the functional job of enumerating and initializing the platform

## UEFI Benefits

### ■ Expansibility

ODM/OEM and customers can add their own PBA easily. PBA can be integrated in BIOS flash or placed in external mass storage devices.

### ■ Migration ability

Drivers, PBA can be migrated easily from one platform to another because of the highly modularized design on a unified framework.

## IEI Products with UEFI BIOS

### 1. C206/Q67/B65, QM67/HM65, QM57/HM55 chipsets

SPCIE-C2060, PCIE-Q670, IMBA-C2060, IMBA-Q670, IMB-C2060, IMB-Q670, KINO-QM670, KINO-QM57A, KINO-HM551, NOVA-HM551, NANO-QM57A, NANO-HM551

### 2. G41 chipset family

IMBA-G410, IMBA-G412ISA, KINO-G410

### 3. D525/D425/N455 family

UEFI BIOS has better compatibility with the dual ranks x16 DRAM memory module of the D425/D525/N455 series

## IEI UEFI BIOS Features

### 1. Familiarity

Providing advanced UEFI functionality with a familiar BIOS setup interface.

### 2. Compatibility

Designed to extend BIOS compatibility into UEFI solutions. Supporting legacy Option Rom binaries and operating systems requiring a legacy BIOS runtime interface.



### 3. Functionality

- (1) Compliant with iSMN H/W monitor utility
- (2) Dynamic LOGO
- (3) Fast boot
- (4) ICP Standard Feature – AT/ATX, WDT, DIO
- (5) BIOS setup with touch device support
- (6) HDD/Storage support over 2.2TB with 64-bit operation system

### 4. Extensibility

The option to add and execute pre-boot applications (PBA) in a protected hidden partition

- (1) HDD Security
- (2) Shell Environment
- (3) Pre-boot Messenger (Third Party)
- (4) Pre-boot Network Browser (Third Party)
- (5) Pre-boot Antivirus (Third Party)

# IEI One Key Recovery Solution



IEI's unique One Key Recovery solution includes exclusive technology to recover and backup your operating system by just one click without any complicated settings. One Key Recovery software comes is shipped with every IEI SBC, embedded system and all-in-one panel PC product.

## Recovery Tool for IEI Products Only

The IEI recovery CD includes system recovery software developed by IEI using Windows PE 2.0. The recovery CD helps create full system backup and restore from system failures. Users don't need to buy additional system backup and recovery tools.

### System Recovery



User Calamity



Recovery system



Normal

### System Backup



Normal



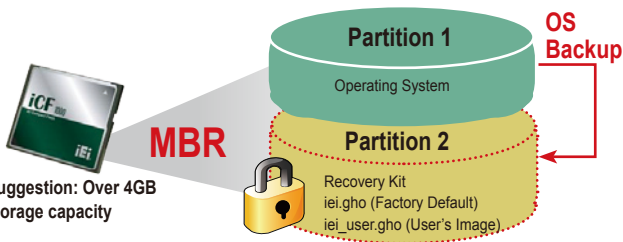
Backup system



New image

### Recovery Partition

A hidden partition is a logical section of a disk which is not accessible to the operating system. You can use a partition tool such as SPFDISK to create a hidden partition first. It may be used to protect confidential data or store backup of the system.



#### IEI Recovery Solution Advantages:

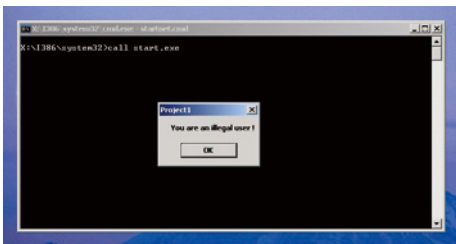
- No need to make recovery discs or follow trivial imaging procedures
- Simple steps to backup or restore the system. No IT personnel required.
- Backup/Restore system easily through unique multi-menu
- One key to make recovery disc
- One key to restore system

### IEI Products Only



#### IEI Certified Sticker

The IEI recovery CD is only for IEI products. A message warns, "you are an illegal user" when using the CD on non-IEI products. This protection is detected through the BIOS of the IEI boards.



#### Support OS List

|                                |                      |
|--------------------------------|----------------------|
| Windows® XP                    | Windows® Vista       |
| Windows® 7                     | Windows® CE 5.0      |
| Windows® CE 6.0                | Windows® XP Embedded |
| Linux OS                       |                      |
| 1.Red Hat RHEL- 5.4            |                      |
| 2.Fedora Core 7, 8, 10, 11, 12 |                      |
| 3.Ubuntu 6.10, 7.10, 8.10      |                      |
| 4.Debien 4.0, 5.0              |                      |
| 5. SuSe 11.2                   |                      |

# Rapid Imaging/ Migration Through One Touch Hot Key

Neither specialized IT staff nor consultants are required in order to implement the system imaging and data migration. Just press the F3 key to get access to the recovery menu. The one key operation simplifies the imaging or migration process to help IT staff get the system up and running quickly.

**EASY WAY**



## One-Key Recovery

- Factory restore: restore your system to default setting (iei.gho)
- Restore your last backup: recover the last system configuration (iei\_user.gho)



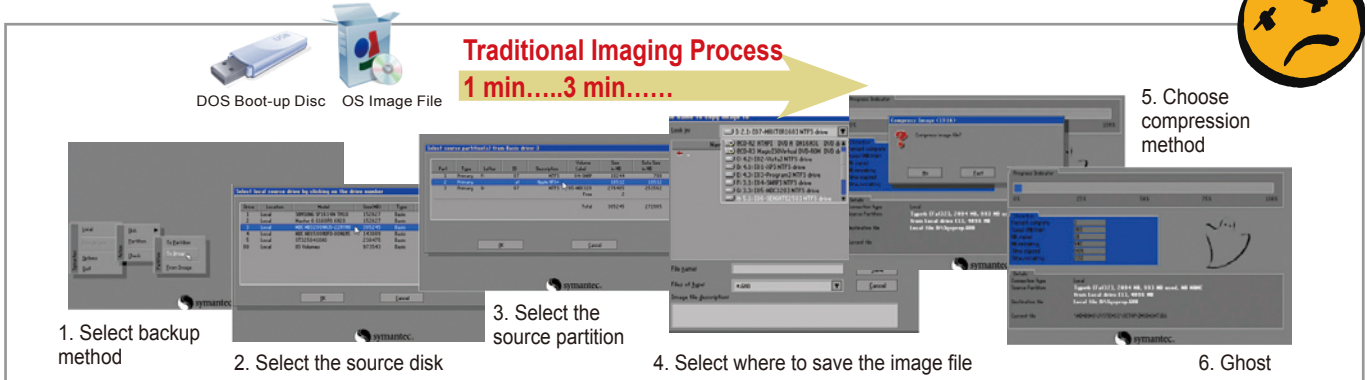
```

1. Factory Restore
2. Backup system
3. Restore your last backup.
4. Manual
5. Quit
Please type the number to select and then press Enter:_
    
```



## One-Key Backup

Backup your operating system to the secure hidden partition. You can create your own ghost image as "iei\_user.gho" including your application programs set-ups.



## Benefits

### Remote Maintenance Reduces the Cost of IT Infrastructure

All migration tasks can be performed remotely from a central management console. This reduces the need for physical visits which saves time and money.

**2** Use the recovery tool to restore your OS at the local site

**1** When the system is infected by virus or a blue screen appears



**One Key Restore + Remote KVM**



**F3 One Key Recovery**  
iEi symantec.

Intel® Q57/QM57  
IAMT 6.0

Remote Troubleshooting

# IEI Intelligent System Management Module

## What is the IEI Intelligent System Management Module (iSMM) ?

IEI iSMM is a system health supervision API which utilizes sensor chips on IEI motherboards to track system and CPU temperatures, voltages, cooling fan speed., WDT and Digital I/O set up status. By quickly capturing and reporting system health data, users can prevent disasters such as system instability or damage.

# iSMM

### ■ Features

- External and on-chip voltages data feedback
- CPU and system temperature data feedback
- Cooling fan speed data feedback
- Cooling fan speed controlled by PWM/On-Off/Automatic Mode
- Warning signals by beeper and sound effect
- WDT Test
- Programmable Digital I/O
- System health configurations save and load

### ■ Available models

iSMM support below super I/O:

1. Winbond W83627
2. Winbond W83697
3. ITE IT8712
4. ITE IT8718
5. Fintek F81216D
6. Fintek F8186
7. SMC SCH311x

### ■ Available operation system

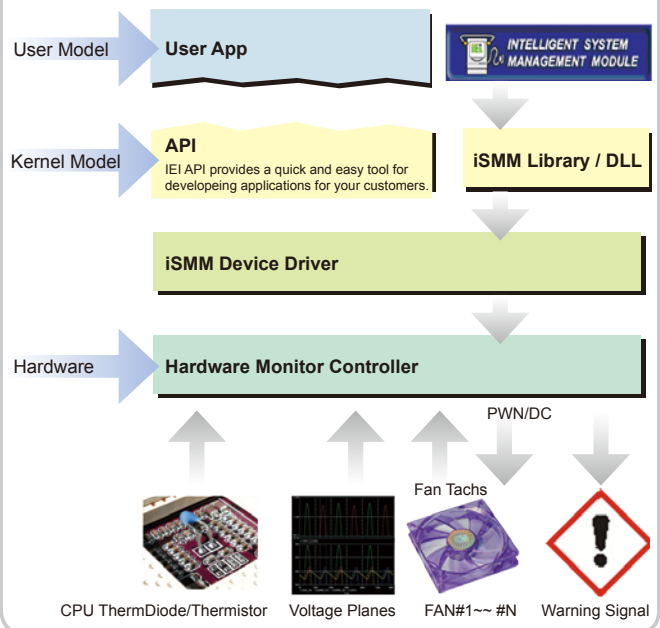
- a. Windows XP
- b. Windows Vista
- c. Windows 7

Note: Please disable the UAC function before installing iSMM software under Windows Vista and Windows 7.

### Advantages

Know that your system is running within safe limits  
Prevent disasters such as system instability or damage.

### Architecture



## IEI Exclusive Diagnosis Software

Full Graphic Interface,  
Real-time, 6 in 1 Modules !!



IEI Solutions  
Compliance Only

### Functions

|   |   |  |  |  |  |   |
|---|---|--|--|--|--|---|
| <p><b>Temp.</b><br/>CPU + System temperature monitoring</p> | <p><b>Fan</b><br/>Dynamic fan speed controlling</p> | <p><b>Voltage.</b><br/>Real time voltage alarm</p> | <p><b>DIO</b><br/>Easy Digital I/O configuration</p> | <p><b>WDT</b><br/>Trouble free watch dog timer testing</p> | <p><b>Save/Load</b><br/>Flexibility user profile recover</p> | <p><b>Cash drawer</b><br/>Cash drawer status monitoring</p> |
|---|---|--|--|--|--|---|