

# ACE-A406A

60 W AC-DC ATX open frame power supply

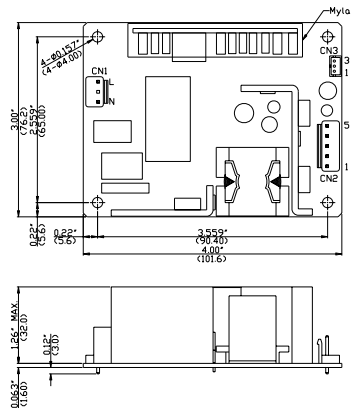


Input Type	90~264 VAC Full Range		
Input Frequency	47 Hz~63 Hz		
Output Voltage	+5V	+12 V	+5 Vsb
	1A	4.5 A (0.5 A min.)	1 A
Efficiency	75 %		
Temperature	Operating : 0 °C~ 50 °C, Storage : -30 °C~ 70 °C		
MTBF(hrs)	100.000		
Output Connector	Optional cable		
Dimensions	76.2 x 101.6 x 32 (mm)		

## Ordering Information

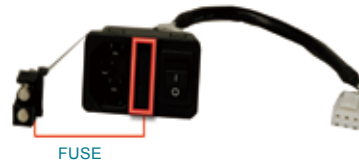
Part No.	Description
ACE-A406A-RS	60W AC-DC ATX open frame power supply

## Dimensions



**60W**

## Optional 1 AC Input Solution



PN: CB-704EC-RS  
 20 cm AC input cable with fuse

## Optional 2 PN: CB-5PSBC-RS

